



FIRE BARRIER EQUIPPED
PRODUCTS

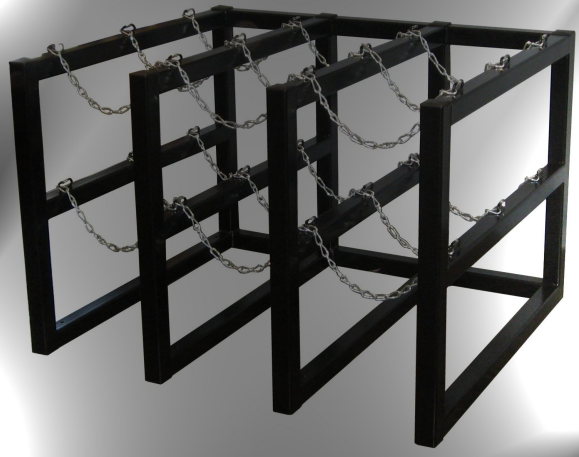
FIRST SAFETY CORPORATION



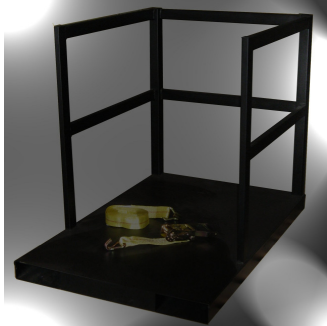
GAS CYLINDER
HAND TRUCKS



CYLINDER SUPPORT
BRACKETS



CYLINDER BARRICADE RACKS



CYLINDER PALLETS



STAINLESS STEEL AND
SPECIALTY GAS
PRODUCTS

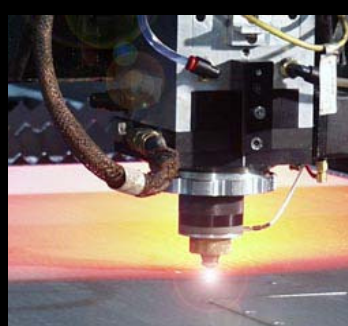


CYLINDER SECURITY

OUR 20th YEAR
PROUDLY MANUFACTURING IN
THE USA USING AMERICAN
LABOR, MATERIALS, and FINISHING



AWS CERTIFIED WELDERS



ISO CERTIFIED STEEL PARTS



RACKS AND STANDS

About First Safety.....

Formed in 1991, First Safety focuses on servicing the industrial, safety and scientific markets with the highest quality products available for handling gas cylinders. State-of-the-art manufacturing, coupled with the experience of developing over 2500 industrial products, help us provide cost effective products. **First Safety products follow these premises:**

- Industrial **Gas Cylinders are inherently dangerous**, because of their weight, high-pressure contents, and unwieldy shape. Therefore, safe handling of gas cylinders requires the best available products, without compromising function for cheaper cost. Heavier construction is always better.
- Old product designs often become accepted because they are better marketed, not better performing. Copying an existing product design does not advance the state-of-the-art. Only a **superior performing product will be accepted by First Safety** as a First Safety product.
- Cylinders **should not be lifted by hand** if it can be avoided by any other means. As example, all hand trucks, racks and stands have Zero Lift Height perimeter braced designs, unique in the industry.
- **Chains cannot be used as primary cylinder support** for mobile equipment, unless they can be tightened against the cylinders to eliminate the cylinders from shifting in transit. We use only cinch straps, locking collar rings and clamping chain systems for in-transit products
- Gas cylinders should be **released from restraints one at a time**. Releasing more than one cylinder is inherently dangerous.
- **American manufacturing should support American industry**. We use only American skilled labor and materials whenever available in manufacturing.

We take advantage of the best available technology to offer you products with demonstrable value and quality. We excel at custom engineered products to meet special needs. Give us an opportunity to show you what our **uncompromising standards** and ingenuity can do for you. We welcome comparisons between our products, and any products from any source worldwide. We live up to our name.

Co-owners

Mike Litin and Doug Lownik

To Reach us with your requirements or comments, our personal emails are:
mike@firstsafety.com and doug@firstsafety.com



Installation before
and after use of
First Safety
products.

Photos courtesy Praxair

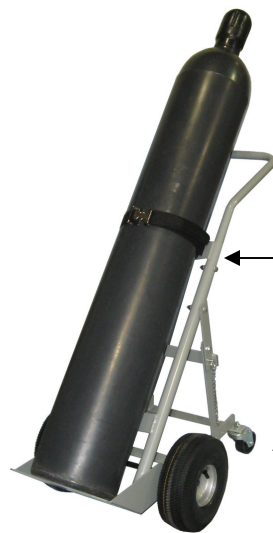


First Safety Corporation Offices
PO Box 3578 * Janesville, WI 53547
(608)758-0500 Fax (608)758-4696
Manufacturing, Shipping, Engineering
3920 Kennedy Road * Janesville, WI 53545
(608)758-0500 * (608)758-8944
Web Site: firstsafety.com

SINGLE CYLINDER HAND TRUCKS:

Trucks for gas cylinders up to 12 inch diameter.

These units are single cylinder with 8 inch semi-pneumatic or 10.5 inch pneumatic main wheels. Models G-903 and G-904 shown offer optional fold-down rear casters with 3 inch diameter casters on a stable and easy to use system. Construction is of heavy Hot Rolled Steel with 3/16 inch thick steel supports and 1.0 inch and 1.33 inch diameter round steel tube with 1138 PSI rated poly straps with steel cinch buckles. Stainless Steel Model G-902SS has 8 inch poly main wheels and nylon strap and buckle set.



Upper handle detaches for shipment. Models can ship UPS.

1.5 inch poly strap and buckle system, lab tested to 1138 PSI., are standard.

All models are available with wide-set dual rear caster assembly for safe, stable cylinder transport. All fold flat against rear of hand truck for storage in the upright position



G-901



G-902



G-903



G-902SS



G-904

ONE CYLINDER MODELS

Part #	Description	LxWxH	Lb.	Main Wheels	Main Wheel Diameter
G-901	Two wheel Cylinder Hand Truck 12.375 in Max Dia.	18"x18"x47"	35 lb.	Semipneumatic	8 inch
G-902	Heavy Duty Two Wheeled Hand Truck, 1 cylinder	18"x19"x47"	37 lb.	Fully Pneumatic	10.5 inch
G-902 SS	Stainless Steel/Poly Wheel Single Cylinder Hand Truck	18"x18"x47"	34 lb.	Solid Polypropylene	8 inch
G-903	Four Wheel One Cylinder Hand Truck Semi Pneumatic Tires	19"x19"x47"	44 lb.	Semipneumatic	8 inch
G-904	Four Wheel Hand Truck-Pneumatic tires, 1 cylinder	19"x21"x47"	48 lb.	Fully Pneumatic	10.5 inch

TWO CYLINDER MODELS

Part #	Description	LxWxH	Lb.	Main Wheels	Main Wheel Diameter
G-952	Two Cylinder HD Hand Truck	20"x31.5"x47"	51 lb.	Fully Pneumatic	10.5 inch
G-953	Four Wheel Two Cylinder Hand Truck 12" Max Dia.	20"x31.5"x47"	67 lb.	Fully Pneumatic	10.5 inch
G-991	Heavy Duty, Two Cylinder Hand Truck, 16" Pneumatic Wheels	24"x32"x47"	78 lb.	Fully Pneumatic	16 inch
G-973	Four Wheel Rear Caster, Two Cylinder Hand Truck 16" Pneumatics	24"x32"x47"	102 lb.	Fully Pneumatic	16 inch
G-987	Welding Cart 10 and 13" Diameter Bottles, 20 Inch Steel Wheels	26"x31"x47"	86 lb.	Full Steel Construction	20 inch

Hand Truck Wheel Options

8 Inch Semipneumatic
Single Cylinder Hand Trucks



Rated 200 lb. capacity each

10.5 Inch Fully Pneumatic
1 and 2 Cylinder Hand Trucks



Rated 370 lb. capacity each

20 Inch All Steel Construction
2 Cylinder Hand Trucks



Rated 310 lb. capacity each

16 Inch Fully Pneumatic
2 Cylinder Hand Trucks



Rated 590 lb. capacity each

TWO CYLINDER HAND TRUCKS



G-952

Hand Trucks for 2 gas cylinders with combined diameters up to 23 inches. These units have available 10.5 inch or 16 inch diameter Fully pneumatic main wheels with robust 4 ply reinforced construction or 20 inch diameter all-steel spoke wheels. All main wheels have dual ball bearings. Pneumatic wheel models shown offer optional fold-down rear swivel casters with 3 inch (G-953) or 5 inch (G-973) diameter.

Casters are wide set and balance point calculated for superior safety and stability. Rear caster sets also feature 8 knuckle articulating action with heavy steel hinge posts and nylon washers for smooth folding action. Fully welded construction is built from heavy Hot Rolled Steel with 3/16 inch thick steel supports and 1.0 inch and 1.33 inch diameter round steel tubing. Base plates accomplish zero lift height by using 1/8 inch thick steel, laser cut and formed and bead reinforced single piece construction, heavier than any other manufacturer. All parts are powder painted for durability.

Cylinders are held securely by use of 1138 pound rated and laboratory tested heavy poly straps with steel cinch buckles. All gas cylinders are held in place independently for improved safety.

Optional locking posts and collar plates add total cylinder immobilization and can be added to any 2 cylinder First Safety hand truck. The locking post system, originally developed for US Navy shipboard service, secures gas cylinders even when hand truck are turned 90 degrees from upright in any direction.



G-987



G-953



G-991



G-953TT

For jobsite applications, open top (G-953TT) or locking lid (G-953TL) tool boxes can be added to any of the shown hand trucks. The boxes measure a generous 7x7x20 inch size and include end slots to enable attached torch sets to be safely stored inside.



G-973



G-953LT



Rear view of G-991 with Locking Posts installed

JOB SITE & FIREWALL EQUIPPED HAND TRUCKS:



G-3901

Trucks for two cylinders up to 10.5 and 13 inch diameter. Sharing features found on our standard hand trucks, the Fire Wall Series options include tool and torch trays with open or locking lids, hoist hooks, and cylinder locking post system. Firewall models allow storage of fuel and oxygen cylinders in compliance with OSHA standard 1910.253 (b)(4)(iii), NFPA 1 Uniform Fire Code (2006) 63.3.1.6 and NFPA 55-7.1.6.2.1 regulations using Marinite™ one hour rated fire barrier material. Dual cylinder capacity with 10 inch or 16 inch Speed Rated pneumatic or 20 inch steel main wheels to handle finished or unfinished surfaces. First Safety hand trucks are exterior grade powder coated for durability. Three Way push handle system greatly enhances safety and control for top heavy loads. Rear caster assembly option uses 5 inch diameter casters.



G-3987



G-3989

MODEL NUMBER	DESCRIPTION	MAIN WHEEL TYPE	REAR CASTERS	WEIGHT CAPACITY	SIZE WxDxH	WEIGHT
G-3952	Two Cylinder Hand Truck, Fire Wall	10.5 In Pneumatic	None	700 Lb.	32x36"x60"	108 lb.
G-3901	HD Two Cylinder Hand Truck, Fire Wall	16 in. Pneumatic	None	1000 lb.	32x36"x60"	131 lb.
G-3973	4 Wheel Rear Caster, Fire Wall Hand Truck	16 in. Pneumatic	5 Inch	1000 lb.	32x36"x61"	175 lb.
G-3987	Two Cylinder Welding Truck, Fire Wall	20 in. All Steel	None	700 lb.	32x36"x60"	131 lb.
G-3989	Two Cylinder Firewall Truck, Locking Post System, Hoist Ring, Tool Box	20 in. All Steel	None	700 lb.	32x36"x64"	170 lb.
G-3990	4 Wheel Rear Caster Fire Wall Hand Truck	20 in. All Steel	5 Inch	1000 lb.	32x36"x60"	170 lb.
G-3991	Two Cylinder Firewall, Locking Post System ,Hoist Ring, Tool Box	16 in. Pneumatic	none	1000 lb.	32x36"x64"	165 lb.
G-3993	4 Wheel Two Cylinder Firewall, Locking Posts, Hoist Ring, Tool Box	16 in. Pneumatic	5 Inch	1000 lb.	32x36"x64"	194 lb.
G-953TT	Tool Tray Attachment				20"x8"x8"	14 lb.
G-953LT	Tool Tray Attachment with Locking Lid				20"x8"x8"	17 lb.



G-3973



G-3991



G-3987



G-3993



G-3549



G-3587



G-3591



G-3502

HAND TRUCKS WITH HOIST HOOKS

Trucks for gas cylinders up to 12 inch diameter. These units are single and two cylinder type with 10.5 or 16 inch diameter pneumatic main wheels or 20 inch diameter steel wheels. Triple handle design helps control the high center of gravity created by the extensive structural framing supplied to make these units safe when lifted by hoist rigs. Construction is heavy 11 gauge HR Steel with 3/16 inch thick steel supports, 3/8 inch thick hoist plates and round steel tube. Heavy poly straps with steel cinch buckles, 2 per cylinder station and cylinder locking system provides support. Options in this series include tool trays, locking lid tool boxes and optional 5 inch diameter fold-down rear casters (G-3553 and G-3549). Powder coated for durability. Fully welded, Made in USA.



G-3553



G-3591

Rear view showing extensive structural framing. Triple handle gives operator high-low hand position **critical for safe handling** of heavy tall loads. Cylinder locking system, developed for the US Navy, **clamps cylinders in place** at any angle from upright to full 90 degree rotation. **Three supports for each cylinder creates the safest lift system available anywhere.**

MODEL NUMBER	DESCRIPTION	SIZE WxDxH	WEIGHT	MAIN WHEEL TYPE	REAR CASTERS	WEIGHT CAPACITY
G-3502	Hoist Ring Single Cylinder Hand Truck	20"x21"x70"	86 lb.	10.5 In Pneumatic	None	700 lb.
G-3549	Four Wheel 2 Cylinder Hand Truck, Hoist Ring, Tool Tray	20"x31.5"x70"	136 lb.	10.5 In Pneumatic	3 inch	1000 lb.
G-3552	Two Cylinder HD Hand Truck, Hoist Ring	20"x31.5"x70"	104 lb.	10.5 In Pneumatic	None	700 lb.
G-3553	Four Wheel Two Cylinder Hand Truck, Hoist Ring	20"x31.5"x70"	121 lb.	10.5 In Pneumatic	3 inch	1000 lb.
G-3587	Two Cylinder HD Hand Truck, Hoist Ring	20"x31.5"x70"	118 lb.	20 in. All Steel	None	700 lb.
G-3591	Heavy Duty, Hoist Ring Two Cylinder Hand Truck	24"x34"x70"	121 lb.	16 in. Pneumatic	None	1000 lb.
G-3599	Four Wheel, Hoist Ring Two Cyl. Hand Truck, Tool Tray	24"x34"x70"	166 lb.	16 in. Pneumatic	5 Inch	1000 lb.
G-953TT	Tool Tray Attachment	20"x8"x8"	10 lb			
G-953LT	Locking Top Tool Tray Attachment	20"x8"x8"	14 lb.			

All Units Include Cylinder Locking Post System

GAS CYLINDER BARRICADE RACKS STRUCTURAL TUBE DESIGN



Structural Tube Design racks are recommended for indoor or outdoor bulk cylinder storage. STD series racks surround cylinders with 2 inch square steel tube continuously seam welded and sealed with exterior grade powder paint. Two levels of welded steel chains with snaps for each cylinder. Standard and custom configurations from one to 20 cylinder capacity, up to 12 inch diameter standard or 33 inch cryogenic cylinders. Units meet or exceed UFC, NFPA, CGA, and OSHA, as well as Seismic Zone 4 requirements. Optional process rail models add 2 controls mounting struts. Firewall barriers are rated 1 hour fire resistance with Marinite™ barrier material sealed in 14 gauge steel panels. Fire barriers can be installed freestanding or attach to racks. Ships motor freight.



GSTD-2x1

FIREWALLS



GSKD-FN

GSTD-2x2P

PROCESS CONTROLS MOUNTING RAILS



GSTD-4x2



GSTD-1x2



GSTD-2x3

STANDARD DESIGNS FOR 1 TO 20 GAS CYLINDERS

Model Number	Description	Cylinder Capacity	Size WxDxH	Weight
GSTD-1X1	1 Cylinder Tube Rack 1 cyl wide x 1 deep	1	16x16x30	58 lb.
GSTD-1x2	2 Cylinder Tube style rack 1 cyl wide x 2 deep	2	16x26x30	82 lb.
GSTD-1x3	3 Cylinder Tube Rack 1 cyl wide x 3 deep	3	16x38x50	92 lb.
GSTD-1x4	4 Cylinder Tube style rack 1 cyl wide x 4 deep	4	16x50x30	110 lb.
Process Rail	Add controls mounting to 1 Cylinder wide Rack		16W x72H	+30 lb
GSTD-2x1	2 Cylinder Tube Rack 2 cyl wide x 1 deep	2	30x16x30	91 lb.
GSTD-2x2	4 Cylinder Tube style rack 2 cyl wide x 2 deep	4	20x26x30	120 lb.
GSTD-2x3	6 Cylinder Tube Rack 2 cyl wide x 3 deep	6	30x38x30	154 lb.
GSTD-2X4	8 Cylinder Rack 2 cyl wide x 4 deep	8	30x50x30	190 lb.
Process Rail	Add controls mounting to 2 Cylinder wide Rack		30Wx72H	+35 lb.
GSTD-3x1	3 Cylinder Tube Rack 3 cyl wide x 1 deep	3	44x16x30	124 lb.
GSTD-3x2	6 Cylinder Tube Rack 3 cyl wide x 2 deep	6	44x26x30	165 lb.
GSTD-3x3	9 Cylinder Rack 3 Cyl wide x 3 deep	9	44x40x30	211 lb.
GSTD-3x4	12 Cylinder Rack 3 cyl wide x 4 deep	12	44x50x30	308 lb.
Process Rail	Add controls mounting to 3 Cylinder wide Rack		44Wx72H	+40 lb.
GSTD-4x1	4 Cylinder Rack 4 cyl wide x 1 deep	4	58x16x30	194 lb
GSTD-4x2	8 Cylinder Rack 4 cyl wide x 2 deep	8	58x26x30	249 lb.
GSTD-4x3	12 Cylinder Rack 4 cyl wide x 3 deep	12	58x40x30	294 lb.
GSTD-4x4	16 Cylinder Rack 4 cyl wide x 4 deep	16	58x50x30	339 lb.
Process Rail	Add controls mounting to 4 Cylinder wide Rack		58Wx75H	+45 lb.
GSTD-5x1	5 Cylinder Rack 5 cyl wide x 1 deep	5	70x16x30	254 lb
GSTD-5x2	10 Cylinder Rack 5 cyl wide x 2 deep	10	70x26x30	299 lb.
GSTD-5x3	15 Cylinder Rack 5 cyl wide x 3 deep	15	70x40x30	294 lb.
GSTD-5x4	20 Cylinder Rack 5 cyl wide x 4 deep	20	70x50x30	389 lb.
GSKD-3900	Fire Resistant Wall Panel, 1 Hour Fire Rated		12x2x60	125 lb.
GSKD-FN	Fire Resistant Panel, Narrow, 1 Hour Fire Rated		28x2x75	160 lb.
GSKD-FW	Fire Resistant Panel, Wide, 1 Hour Fire Rated		52x2x75	190 lb.
GSTD-CRYO	Cryogenic Cylinder up to 22 Inch Diameter	1	28x26x40	110 lb.
GSTD-CRYOL	Cryogenic Cylinder up to 33 Inch Diameter	1	38x36x40	119 lb.
GSTD-CRYO2	Cryogenic Cylinders up to 22 Inch Diameter	2	54x26x40	155 lb.
GSTD-CRYO2L	Cryogenic Cylinder up to 22 Inch Diameter	2	74x36x40	170 lb.



G-2080



G-2008



G-2020

CYLINDER PALLETS AND FORKLIFT CART

Eight models and sizes designed for transport of multiple cylinders. G-2020 will fit 21 cylinders of 300 CFT capacity or Four 23 inch Cryo cylinders, G-2014 and G-2080 hold Fourteen cylinders or 2 Cryo bottles, and G2008 fits 8 cylinders or a single Cryo bottle. G-2008, 2014 and G-2080 have end-loaded orientation for easy loading onto smaller truck beds, such as pickup trucks equipped with tie-down lugs. Model G-2080 incorporates a full width firewall with 1 hour rated barrier material Marinite I™ to allow use of fuels and oxidizers. 10,000 lb. rated ratchet strap, included, attaches at 3 different heights. Steel construction with textured powder paint finish to provide nonskid surface. Two way fully enclosed forklift channels. Two, Four and Six Cylinder Pallets are sized for cylinders 6 to 12 inch diameter and also use the full length 3 x 7.75" fork channels in the larger pallets. The 2 through six cylinder models use two nylon strap and steel buckles for each cylinder to secure cylinders to the pallets.



G-2014



G-450



G-251



G-651



G-451

Model Number	Description	Size WxDxH	Weight	Cylinder Capacity	Strap Style
G-2008	Cylinder Pallet Steel Hold 8 300CFT Cylinders or 1 Cryo Bottle	24x36x36	136 lbs	8	Ratchet Binding Strap
G-2014	Cylinder Pallet Steel Hold 14 300CFT Cylinders or 2 Cryo Bottles	32x48x36	210 lb.	14	Ratchet Binding Strap
G-2020	Cylinder Pallet Steel Hold 21 300CFT Cylinders or 4 Cryo Bottles	48x48x36	272 lb.	21	Ratchet Binding Strap
G-2080	Cylinder Pallet, Steel with Firewall, holds 14 300CFT Cylinders	32x48x36	365 lb.	14	Ratchet Binding Straps (2)
G-251	Two Cylinder Forklift Pallet, 2 straps per cylinder, 2 tiedown loops	24x24x32"	131 lb.	2	2 Cinch Straps per Cylinder
G-451	Four Cylinder Forklift Pallet, 2 straps per cylinder, 2 tiedown loops	24x36x32"	168 lb.	4	2 Cinch Straps per Cylinder
G-651	Six Cylinder Forklift Pallet, 2 straps per cylinder, 2 tiedown loops	24x36x32"	202 lb.	6	2 Cinch Straps per Cylinder
G-450	Four Cylinder Forklift Portable Stand	24"x 40"x30"	122 lb.	4	2 Cinch Straps per Cylinder

GAS CYLINDER SUPPORT BRACKETS

Steel, Stainless Steel and Poly Alloy Construction Gas Cylinder Brackets

One to four cylinder capacity. 11 Gauge hot rolled steel or 12 Gauge Type 304 Stainless Steel. Edges are protected with steel reinforced vinyl edge guarding to maintain and protect your cylinders and provide extra grip. Steel parts are sealed with powder paint. Model G-110 adjustable width bracket is injection molded in poly alloy and includes chain and strap set. Straps and cinch style buckles support cylinders. Support straps are 1.5 inch wide by 54 inch long poly with steel cinch buckle rated 1138 PSI, supporting cylinders from 4.0 to 12.0 inch diameter. Stainless steel construction brackets use the same strap with a nylon side latch buckle. All steel construction brackets include openings to retrofit secondary support chains, one set for each cylinder station. Optional chain sets (G-105) are to be used as secondary cylinder supports, and can retrofit any First Safety bracket systems. Chains are welded heavy duty twist link style. Size 2/0 chains are plated for corrosion resistance, with twist link chosen for this use to allow chains links to lay flat against the cylinders, enabling a tighter fit and preventing damage to required labeling.



G-100



G-100SS



G-110



G-150



G-150SS



G-200



G-200SS



G-105



G-250



G-300



G-401

CYLINDER STORAGE RACKS AND STANDS:

For gas cylinders up to 12 inch diameter, these racks and stands are constructed from 11 gauge and heavier plate steel. Single through Eight cylinder capacity racks share construction features with our brackets. All units are fully welded construction with quality powder paint finish. Single cylinder stand G-181 includes compression clamping bar in addition to cylinder strap. All edges coming in direct contact with cylinders have steel reinforced vinyl edge molding to protect the cylinders and provide extra grip. 1 ½ inch wide polypropylene straps and cinch buckles supports each cylinder station with the 4, 6, and 8 cylinder racks having 2 cylinder straps per cylinder station. Standard rack ship boxed with floor legs disassembled for freight savings.



G-181



G-275



G-400



G-600



G-375



G-800



G-475

G-100	Single Cylinder Wall Bracket	4.25"x8"x2.25"	3 lb.
G-100 SS	Single Cylinder Wall Bracket, Stainless Steel	4.25"x8"x2.25"	3 lb.
G-105	Optional Chain Set, All Brackets	41" Long	1 lb.
G-110	Single Cylinder Adjustable Bracket	4"x9"x2"	2 lb.
G-150	Single Cylinder Bench Mount Bracket	4.25"x8"x4.25"	3 lb.
G-150SS	Single Cylinder Bench Mount Bracket, Stainless Steel	4.25"x8"x4.25"	3 lb.
G-181	Single Cylinder Floor Stand	16"x16"x15"	21 lb.
G-200	Double Cylinder Wall Bracket	4.25"x24"x2.25"	8 lb.
G-200 SS	Double Cylinder Wall Bracket, Stainless Steel	4.25"x24"x2.25"	9 lb.
G-250	Double Cylinder Bench Bracket	4.25"x24"x4.25"	11 lb.
G-250SS	Two Cylinder Bench Mount Bracket, Stainless Steel	4.25"x24"x4.25"	11 lb.
G-275	Two Cylinder Wall /Floor Stand	12"x28"x30"	41 lb.
G-300	Triple Cylinder Wall Bracket	4.25"x36"x2.25"	11 lb.
G-375	Three Cylinder Wall /Floor Stand	12"x40"x30"	49 lb.
G-400	Four Cylinder Floor Stand	24"x40"x30"	69 lb.
G-401	Four Cylinder Wall Bracket	4.25"x48"x2.25"	14 lb.
G-475	Four Cylinder In-Line Racks	14"x52"x30"	63 lb.
G-600	Six Cylinder Floor Stand Rack	24"x52"x30"	84 lb.
G-800	Eight Cylinder Floor Stand Rack	24"x64.5"x30"	96 lb.
G-277	Two Cylinder Process Station Rack	12"x28"x72"	66 lb.
G-377	Three Cylinder Process Station Rack	12"x40"x72"	84 lb.
G-477	Four Cylinder In Line Process Station	14"x52"x72"	97 lb.
G-400P	Four Cylinder Process Station	24"x40"x72"	98 lb.
G-600P	Six Cylinder Process Station	24"x52"x72"	129 lb.

CYLINDER PROCESS RACKS

For gas cylinders up to 12 inch diameter, these process stations are constructed from 11 gauge and heavier plate steel. Two to Six cylinder capacity racks share construction features with our brackets. Fully welded construction with quality powder paint finish. Elevated panels or dual mounting struts allow mounting of your cylinder controls and cross-over devices. Units (except G-477) ship partially disassembled for freight savings.



G-600P



G-277



G-377



G-400P



SNAP CAP™ CYLINDER SAFETY CAP: Designed to fit most high and low pressure gas cylinders, the SNAP CAP™ cylinder safety device meets DOT standards. The SNAP CAP denies access to the main cylinder valve and secures regulator attachment, rendering the cylinder, its contents, and your regulator useless to anyone but your designated personnel. Lock included



Part Number	Description	LxWxH	Weight Lb.
G-2501	Snap Cap™ Cylinder Safety Cap Hi Pressure Fine Thread	6.5"x3.125	5 lb.
G-2502	Snap Cap™ Cylinder Safety Cap Low Pressure Fine Thread	6.5"x3.5	5 lb.
G-2503	Snap Cap™ Cylinder Safety Cap Hi Pressure Coarse Thread	6.5"x3.125	5 lb.
G-2504	Snap Cap™ Cylinder Safety Cap Low Pressure Coarse Thread	6.5"x3.5	5 lb.



G-430



G-450



G-630

Part Number	Description	Size LxWxH	Weight Lb.	Cylinder Capacity	Maximum Cylinder Diameter
G-2175	One Cylinder Floor Stand W/Locking Ring	16x16x30"	36	1	10 inch
G-2275	Two Cylinder Floor Stand W/Locking Rings	16x28x30"	49	2	10 inch
G-430	Four Cylinder Cart	24x40x36	153	4	12 inch
G-450	Four Cylinder Forklift Cart	24x40x30"	122	4	12 inch
G-630	Six Cylinder Cart	24x52x36"	183	6	12 inch



G-2275



G-2175

CYLINDER CARTS AND MOBILE RACKS. Mobile carts are constructed from 11 gauge steel. All listed carts share the 1.5 inch polypropylene straps and steel cinch buckles used in our brackets. Wheeled carts hold four (G-430) or six (G-630) cylinders up to 12 inch diameter each and feature 4 inch locking swivel casters and push handles. Forklift portable unit (G-450) holds four cylinders. Units ship ready to assemble in a UPS shippable form and are designed for many years reliable use. Racks with Cylinder Locking Rings (G-2175 and G-2275) allow storage of 6 to 10 inch diameter High Pressure cylinders when used with DOT approved cylinder caps.



G-2000

CYLINDER CADDY™ is designed to lift and transport gas cylinders to install on welding carts, platforms, pallets and in cabinets. Manual lift system has an 11-inch lift capacity and is geared to make lifting easy. All-welded units are powder painted. Chain clamping system with welded loop chain and machined clamp secures cylinders for lifting and transport. 10.5 inch pneumatic main wheels and swivel rear casters ease cylinder handling. Ships truck freight or UPS oversized. Patented.

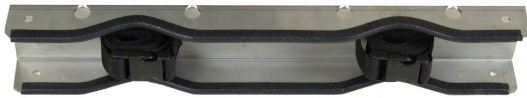
Part Number	Cylinder Handtrucks Description	Size DxWxH	Weight Lb.
G-2000	Cylinder Caddy(tm) Cylinder Lifting Hand Truck	30x32x48"	69 lb.



G-100SS



G-150SS



G-200SS



G-250SS

STAINLESS STEEL WALL AND BENCH BRACKETS

Type 304 Stainless Steel (12 gauge) cylinder brackets with Nylon snap buckles and polypropylene straps.

STAINLESS STEEL HAND TRUCK: Type 304 Stainless Steel with 8 inch Polypropylene wheels.

Part Number	Description	Size DxWxH	Weight Lb.	Cylinder Capacity
G-100 SS	Single Cylinder Wall Bracket, Stainless Steel	2.25"x8"x4.25"	3 lb.	1
G-150 SS	Single Cylinder Bench Mount Bracket, Stainless Steel	4.25"x8"x4.25"	3.5 lb.	1
G-200 SS	Double Cylinder Wall Bracket, Stainless Steel	2.25"x24"x4.25"	9 lb.	2
G-250 SS	Double Cylinder Bench Bracket, Stainless Steel	4.25"x24"x4.25"	11 lb.	2



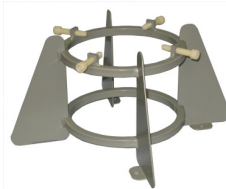
G-770



G-832

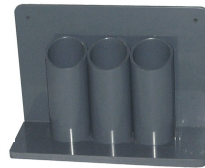


G-835



G-837

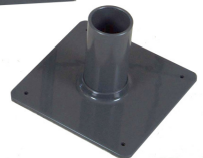
G-730



G-710



G-700



G-760

LB SERIES BOTTLE HOLDERS PVC Constructed units are durable and chemical resistant.

Formed heavy PVC walls chemically welded. Sized to fit LB style (2.0 inch diameter) bottles. Stand G-700 has four bench mounting holes. Models G-710 and G-730 include wall or bench mounting holes, Tote G-760 holds six bottles.

STANDS FOR 3.25" TO 6.75" BOTTLES: Stands for gas bottles commonly used for medical oxygen and in laboratories. Steel construction using 3/8" nylon set screws to hold cylinders. G-832 wall or cart mounts, G-835 and G-837 are table top stands.

TANK TOTE FOR 2.85" CYLINDERS: Molded stand for 2.85" diameter cylinders. Compression fit design.

Part Number	Description	LxWxH	Weight Lb.
G-770	Small bottle stand, Polyethylene, 2.85" diameter bottles	7" round x 3.0"	0.4 lb
G-832	Wall or cart mount for 3.25 to 4.25" Bottles	5.5x5.5x11"	3 lb.
G-835	Table top stand for 3.25 to 4.25" Bottles	9.5x9.5x7"	4 lb.
G-837	Table top stand for 5.25 to 6.75" Bottles	10.5x10.5x7"	5 lb.
G-700	LB Bottle holder, single station table top	8x8x5"	2 lb.
G-710	LB Bottle holder, single station wall or bench mount	8x5x4"	2 lb.
G-730	LB Bottle holder, Three station wall or bench mount	7.5x11x4"	4 lb.
G-760	LB Bottle holder, Six Station with loop handle	9x6x19"	5 lb.



G-5504



G-5504L



G-5020



G-5012

CYLINDER CABINETS

Sizes available for 4, 6, 12 or 21 standard (9.25in. diameter) or 1 to 4 cryogenic cylinders. Fully welded structural steel frames with solid panel roof and laser cut panel walls and doors. All models are internally braced for structural stability. Available option include forklift base using fully enclosed channels with 3 x 7.75 inch openings. Hoist capable Model 5504L has added 2x2 structural steel external frame. With the ability to attach at multiple points, ratchet straps are standard for forklift and hoist portable models, with welded chains standard for stationary models. UV inhibited exterior grade powder painted for durability.



G-5004



Inside Construction



G-5006

Part Number	Description	Size LxWxH	Weight Lb.
G-5004	Four Cylinder Cabinet	24x26x71	212 lbs.
G-5504	Four Cylinder Cabinet, Forklift Base	24x26x75	245 lb.
G-5504L	Four Cylinder Cabinet, Forklift Pockets, Lift Ring	28x26x76	280 lb.
G-5006	Six (6) Cylinder Cabinet	24x36x71	251 lb.
G-5506	Six (6) Cylinder Cabinet, Forklift Base	24x36x75	288 lb.
G-5012	Twelve (12) Cylinder Cabinet	32x48x71	240 lb.
G-5512	Twelve (12) Cylinder Cabinet, Forklift Base	32x48x75	336 lb.
G-5020	Twenty (20) Cylinder Cabinet	48x48x71	306 lb.
G-5520	Twenty (20) Cylinder Cabinet, Forklift Base	48x48x75	396 lb.

MAINTENANCE PARTS

Part#	Description	Dimension	Weight	Fits Part Numbers
G-100A	Replacement 54" Black Strap Assembly	54" Long	0.3 lb.	All Steel Brackets, Racks, Hand Trucks
G-100N	54" Cylinder Strap Assembly, Nylon Buckle for Stainless Steel Products	54" Long	0.3 lb.	G-100SS, 150SS, 200SS
G-100EM	Edge molding all brackets, 10 foot length	120" long	2 lb.	All Steel Brackets, Racks
G-105	Optional Chain Set, Single Cylinder Station, All Brackets	41" Long	1 lb.	All Steel Brackets, Racks
G-430CS	Caster Set for cylinder carts, 2 swivel, 2 fixed casters and hardware		17 lb.	G-430, G-630
G-277PPS	Panel and post set with hardware, converts G-275 to G-277	14"x28"x40"	25 lb.	G-275
G-400PPS	Panel and post set with hardware, converts G-400 to G-400P	12"x36"x40"	40 lb.	G-400
G-600PPS	Panel and post set with hardware, converts G-600 to G-600P	12"x48"x40"	45 lb.	G-600
G2020RS	Ratchet Strap Set for Cylinder Pallets	180.0" long	5 lb.	G-2008, 2012, 2020, 2080
G-STD-C	Chain set, single station, all G-STD Series racks	19.0" long	1 lb.	All GSTD Series Racks except CRYO
G-953TT	Tool Tray Attachment for all 2 cylinder hand trucks	20x8x8"	10 lb	G-950,980, 3500, 3900 Series Hand Trucks
G-953LP	Cylinder Locking Posts, pair, for all 2 cylinder hand trucks	8"x4"x43"	13 lb.	G-950 and 3900 series Hand Trucks
G-953LT	Tool Tray with locking lid Attachment for all 2 cylinder hand trucks	20x8x8"	14 lb.	G-950,980, 3500, 3900 Series Hand Trucks
G-901WS	Semi pneumatic Wheel and axle set, G-900 series hand trucks (2)		9 lb.	G-901,903
G-901W	Semi pneumatic Wheel, 8 inch G-900 series hand trucks		3 lb.	G-901,903
G-902WS	10.5 Inch Pneumatic Wheels and axle set, Single Cylinder Hand Trucks(2)		15 lb.	G-902, 904
G-950W	10.5 Inch Pneumatic Wheel, Single and 2 Cylinder Hand Trucks		5 lb	All 2 Cylinder Hand Trucks
G-950WS	10.5 Inch Pneumatic Wheels and axle set, Two Cylinder Hand Trucks(2)		16 lb.	G-950, 3500, 3900 Series Hand Trucks
G-987W	20 Inch All-Steel Wheel 2 Cylinder Hand Trucks(2)		9 Lb.	G-987, 3587, 3987, 3989, 3990
G-987WS	20 Inch All-Steel Wheel and axle set for 2 Cylinder Hand Trucks		27 lb.	G-987, 3587, 3987, 3989, 3990
G-991W	16 Inch Pneumatic Wheel, 2 Cylinder Hand Trucks		8 lb.	G-973, 991, 3901, 3973, 3991, 3993
G-991WS	16 Inch Pneumatic Wheel and Axle Set, 2 Cylinder Hand Trucks		20 lb.	G-973, 991, 3901, 3973, 3991, 3993
G-903CS	3 inch post swivel caster set, 8 inch and 10.5 inch main wheel trucks*		5 lb.	G-903, 904, 953, 3549, 3553
G-973CS	5 inch post swivel caster set for 15.5 inch main wheel trucks*		8 lb.	G-973, 3599, 3973, 3990, 3993

* Includes 2 fixed and 2 swivel casters with brakes, bolt and nut set

(2) Includes 2 each wheels, flat washers, bronze bushings, axle clips and 1axle



Email: sales@firstsafety.com

Sales/Support *PO Box 3578 * Janesville, WI 53547* (608)758-0500 * Fax (608)758-4696
Manufacturing/Shipping/R & D * 3920 Kennedy Rd * Janesville, WI 53545 * (608)758-0500 * Fax (608)758-8944

The following excerpts are from NFPA 1 Uniform Fire Code 2006

63.2.17 Gas Cabinets. Where a gas cabinet is required, is used to provide separation of gas hazards, or is used to increase the threshold quantity for a gas requiring special provisions, the gas cabinet shall be in accordance with the requirements of 6.17.1 through 6.17.5 of NFPA 55. [55:6.17]

63.2.17.1 Construction. [55:6.17.1]

63.2.17.1.1 Materials of Construction. The gas cabinet shall be constructed of not less than 0.097 in. (2.46 mm) (12 gauge) steel. [55:6.17.1.1]

63.2.17.1.2 Access to Controls. The gas cabinet shall be provided with self-closing limited access ports or noncombustible windows to give access to equipment controls. [55:6.17.1.2]

63.2.17.1.3 Self-Closing Doors. The gas cabinet shall be provided with self-closing doors. [55:6.17.1.3]

63.2.17.2 Ventilation Requirements.

63.2.17.2.1 The gas cabinet shall be provided with an exhaust ventilation system designed to operate at a negative pressure relative to the surrounding area. [55:6.17.2.1]

63.2.17.2.2 Where toxic; highly toxic; pyrophoric; unstable, reactive Class 3 or Class 4; or corrosive gases are contained, the velocity at the face of access ports or windows, with the access port or window open, shall not be less than 200 ft/min (61m/min) average, with not less than 150 ft/min (46m/min) at any single point. [55:6.17.2.2]

63.2.17.3 Fire Protection. Gas cabinets used to contain toxic, highly toxic, or pyrophoric gases shall be internally sprinklered. [55:6.17.3]

63.2.17.4 Quantity Limits. Gas cabinets shall contain not more than three containers, cylinders, or tanks. [55:6.17.4]

63.2.17.5 Separation of Incompatibles. Incompatible gases, as defined by Table 63.3.1.6.2, shall be stored or used within separate gas cabinets. [55:6.17.5]

63.2.18 Exhausted Enclosures.

63.2.18.1 Ventilation Requirements. Where an exhausted enclosure is required or used to increase the threshold quantity for a gas requiring special provisions, the exhausted enclosure shall be provided with an exhaust ventilation system designed to operate at a negative pressure in relationship to the surrounding area. [55:6.18.1]

63.2.18.1.1 Control Velocity at Access Openings. Where toxic; highly toxic; pyrophoric; unstable, reactive Class 3 or Class 4; or corrosive gases are contained, the velocity at the face openings providing access shall not be less than 200 ft/min (61m/min) average, with not less than 150 ft/min (46m/min) at any single point. [55:6.18.1.1]

63.2.18.1.2 Separation of Incompatible Gases Within Enclosures. Cylinders, containers, and tanks within enclosures shall be separated in accordance with Table 63.3.1.6.2. [55:6.18.1.2]

63.3 Compressed Gases.

63.3.1 General. The storage, use, and handling of compressed gases in containers, cylinders, and tanks shall be in accordance with the provisions of Chapter 1 through Chapter 7 or NFPA 55. [55:7.1]

63.2.18.1.3 Fire Protection. Exhausted enclosures shall be internally sprinklered. [55:6.18.1.3]

63.2.18.2 Separation. Incompatible gases, as defined by Table 63.3.1.6.2, shall be stored or used within separate exhausted enclosures. [55:6.18.2]

63.3.1.2.3 Supports. Stationary cylinders, containers, and tanks shall be provided with engineered supports of noncombustible material on noncombustible foundations. [55:7.1.2.3]

63.3.1.4 Security.

63.3.1.4.1 General. Compressed gas containers, cylinders, tanks, and systems shall be secured against accidental dislodgement and against access by unauthorized personnel. [55:7.1.4.1]

63.3.1.4.3 Physical Protection.

63.3.1.4.3.1 Compressed gas containers, cylinders, tanks, and systems that could be exposed to physical damage shall be protected. [55:7.1.4.3.1]

63.3.1.4.3.2 Guard posts or other means shall be provided to protect compressed gas containers, cylinders, tanks, and systems indoors and outdoors from vehicular damage. [55:7.1.4.3.2]

63.3.1.4.4 Securing Compressed Gas Containers, Cylinders, and Tanks. Compressed gas containers, cylinders, and tanks in use or in storage shall be secured to prevent them from falling or being knocked over by corralling them and securing them to a cart, framework, or fixed object by use of a restraint, unless otherwise permitted by 7.1.4.4.1 and 7.1.4.4.2 of NFPA 55. [55:7.1.4.4]

63.3.1.6.1 General.

63.3.1.6.1.1 Compressed gas containers, cylinders, tanks, and systems in storage or use shall be separated from materials and conditions that present exposure hazards to or from each other. [55:7.1.6.1.1]

63.3.1.6.1.2 Compressed gas containers, cylinders, tanks, and systems in storage or use shall be separated in accordance with 7.1.6 or NFPA 55. [55:7.1.6.1.2]

63.3.1.6.2.1 The 20 ft (6.1 m) distance shall be permitted to be reduced without limit when separated by a barrier of noncombustible materials at least 5 ft (1.5 m) high that has a fire resistance rating of at least 0.5 hour. [55:7.1.6.2.1]

63.3.1.6.2.2 The 20 ft (6.1 m) distance shall be permitted to be reduced to 5 ft (1.5 m) where one of the gases is enclosed in a gas cabinet or without limit where both gases are enclosed in gas cabinets. [55:7.1.6.2.2]

63.3.1.6.3.1 A noncombustible partition without openings or penetrations and extending sides not less than 18 in. (457 mm) above and to the sides of the storage area shall be permitted in the lieu of the minimum distance. [55:7.1.6.3.1]

63.3.2 Storage.

63.3.2.1 General.

63.3.2.1.1 Applicability. The storage of compressed gas containers, cylinders, and tanks shall be in accordance with Section 7.2 of NFPA 55. [55:7.2.1.1]

63.3.2.1.2 Upright Storage Flammable Gas in Solution and Liquefied Flammable Gas. Cylinders, containers, and tanks containing liquefied flammable gases and flammable gases in solution shall be positioned in the upright position. [55:7.2.1.2]

63.3.2.1.2.1 Containers and Cylinders of Less than 1.3 Gal (5 L). Containers with a capacity of 1.3 gal (5 L) or less shall be permitted to be stored in a horizontal position. [55:7.2.1.2.1]

63.3.3.1.1 Applicability. The use and handling of compressed gas containers, cylinders, tanks, and systems shall be in accordance with 7.3.1 of NFPA 55. [55:7.3.1.1]

63.3.3.1.7 Upright Use.

63.3.3.1.7.1 Compressed gas containers, cylinders, and tanks containing flammable liquefied gas, except those designed for use in a horizontal position and those compressed gas containers, cylinders, and tanks containing nonliquefied gases, shall be used in a "valve end up" upright position. [55:7.3.1.7.1]

63.3.3.1.7.2 An upright position shall include a position in which the container, cylinder, or tank axis is inclined as much as 45 degrees from the vertical and in which the relief device is always in direct communication with the gas phase. [55:7.3.1.7.2]

63.3.3.1.8.2 The container, cylinder, or tank shall be secured, and the dispensing apparatus shall be designed for use in liquefied gas. [55:7.3.1.8.2]

63.3.3.1.9 Containers and Cylinders of 1.3 Gal (5 L) or Less. Containers or cylinders with a water volume of 1.3 gal (5 L) or less shall be permitted to be used in a horizontal position. [55:7.3.1.9]

63.3.3.3 Handling.

63.3.3.3.1 Applicability. The handling of compressed gas containers, cylinders, and tanks shall be in accordance with 7.3.3 of NFPA 55. [55:7.3.3.1]

63.3.3.3.2 Carts and Trucks.

63.3.3.3.2.1 Containers, cylinders, and tanks shall be moved using an approved method. [55:7.3.3.2.1]

63.3.3.3.2.2 Where containers, cylinders, or tanks are moved by hand cart, hand truck, or other mobile device, such carts, trucks, or devices shall be designed for the secure movement of containers, cylinders, or tanks. [55:7.3.3.2.2]

63.3.3.3.3 Lifting Devices. Ropes, chains, or slings shall not be used to suspend compressed gas containers, cylinders, and tanks unless provisions at time of manufacture have been made on the container, cylinder, or tank for appropriate lifting attachments, such as lugs. [55:7.3.3.3]

63.3.5.3 Indoor Use. The indoor use of corrosive gases shall be provided with a gas cabinet, exhausted enclosure, or gas room. [55:7.5.3]

63.3.5.3.1 Gas Cabinets. Gas cabinets shall be in accordance with Section 6.17 of NFPA 55. [55:7.5.3.1]

63.3.5.3.2 Exhausted Enclosures. Exhausted enclosures shall be in accordance with Section 6.17 of NFPA 55. [55:7.5.3.2]